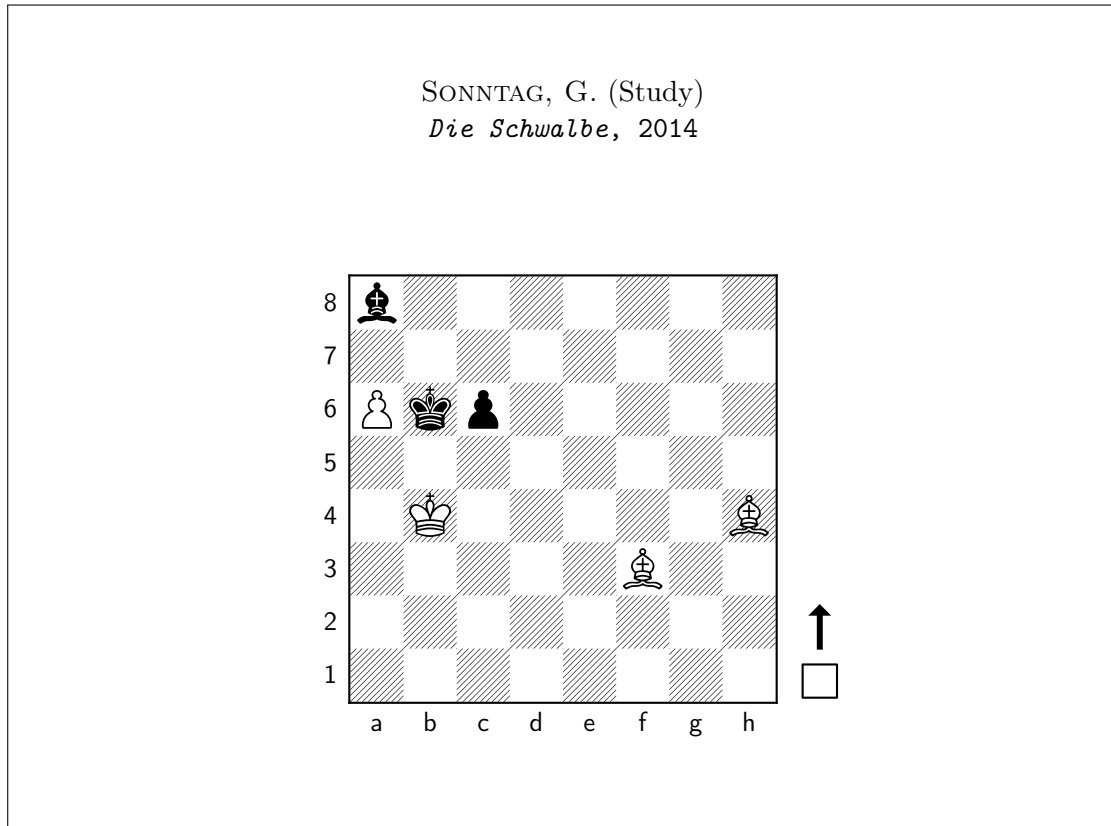


0.1 [2018-04-08] Squeeze the Bishop in: Sonntag (Study), 2014



White's winning strategy involves four ways:

1. Without losing the a-pawn, the King reaches b6 and captures c6, winning the K+B+P vs K ending.
2. Give up the a-pawn, King reaches a7, win the Black Bishop and win with K+B+B vs K+P.
3. Win the Black Bishop with some way and win the endgame.
4. Create mating attacks.

1. ♔a4!

1. ♘e2? c5+! 2. ♔a3 ♘c6 draws.

1 ... ♔xa6

Not capturing the pawn is not better: 1... ♖c7 (1... ♖a7 2. ♖a5 ♖b8 transposes.) 2. ♖a5 ♖d7 (2... ♖b8 leads to mate: 3. ♖b6 ♖c8 4. ♙g4+ ♖b8 5. a7#) 3. ♖b6 ♖d6 4. ♙g3+ ♖d7 5. a7 and 6. ♙xc6 +-.

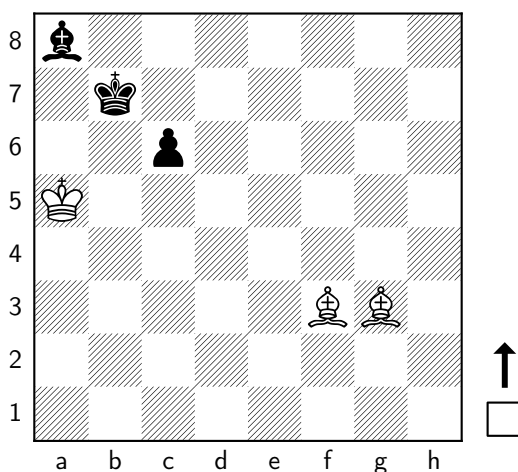
2. ♙f2 ♖b7

After 2... ♙b7, there is an unexpected mate 3. ♙e2#!

3. ♖a5 ♖c7

3... ♖c8 4. ♖b6 ♖b8 (4... ♖d7 5. ♖a7+-.) 5. ♙g4 ♙b7 6. ♙g3+ ♖a8 7. ♙f3 ♙c8 8. ♙xc6+ ♙b7 9. ♙xb7 #.

4. ♙g3+ ♖b7



5. ♙d6!

The only move to win. 5. ♙e5? ♖a7 6. ♙c5+ c5! 7. ♙xc5+ ♖b8 and draws.

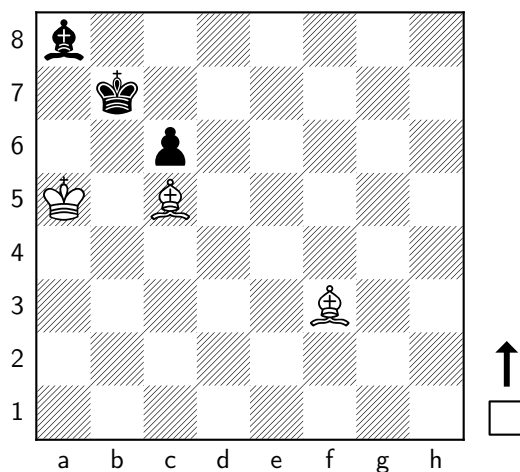
5 ... ♖a7

5... ♖c8 6. ♗b6 ♖d7 7. ♘f4 followed by 8. ♘xc6 +-.

6. ♘c5+ ♖b7

6... ♖b8 7. ♗b6 ♘b7 8. ♘g4 ♖a8 9. ♘f5 ♖b8 10. ♘d7 ♖a8 11. ♖c7 wins the Bishop and the game.

6... ♖b8 7. ♗b6

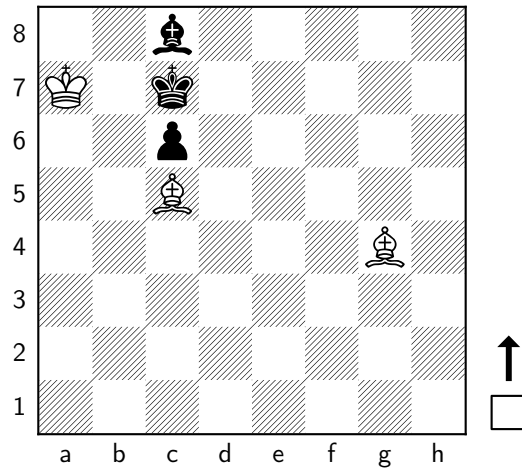


7. ♘g4! ♖c7

7... ♖b8 8. ♗b6 ♘b7 9. ♘d6+ ♖a8 10. ♘f3! mates.

8. ♖a6 ♘b7+

9. ♖a7 ♘c8



10. ♖b6+ ♔d6
 11. ♗xc8

and wins.